



**GHANA STATISTICAL SERVICE (GSS)**  
*Statistics for Development and Progress*

Statistical Bulletin

**(PRODUCER PRICE INDEX PPI)**  
**April, 2021**

Ghana Statistical Service (GSS)

**Statistical Bulletin**

PRODUCER PRICE INDEX (PPI)

**April, 2021**

**Date: May 19, 2021**

**Producer Price Index (PPI)**  
**APRIL 2021**

**CONTENTS**

<b>HIGHLIGHTS FOR APRIL 2021</b>	2
Table 1: Producer Price Index for April 2020 - April 2021	4
Table 2: Producer Price Index (Sep.2006=100) by sectors for April 2020 - April 2021	5
Table 3: Producer Price Index: Yearly Change Rates by Sector for April 2020 - April 2021 (%)	6
Table 4: Producer Price Index: Monthly Change Rates by Sector for April 2020 - April 2021 (%)	7
Table 5: Mining And Quarrying: Producer Price Index (Sept 2006=100) April 2020 - April 2021	8
Table 6: Mining and Quarrying: Yearly Change Rates for April 2020 - April 2021 (%)	9
Table 7: Mining and Quarrying: Monthly Change Rates for April 2020 - April 2021 (%)	10
Table 8: Manufacturing Producer Price Index (Sept 2006=100) for April 2020 - April 2021	11
Table 9: Manufacturing: Yearly Change Rates for April 2020 - April 2021 (%)	17
Table 10: Manufacturing: Monthly Change Rates for April 2020 - April 2021 (%)	23
Table 11: Utilities: Producer Price Index (Sept 2006=100) for April 2020 - April 2021	28
Table 12: Utilities: Yearly Change Rates for April 2020 - April 2021 (%)	29
Table 13: Utilities: Monthly Change Rates for April 2020 - April 2021 (%)	30

## HIGHLIGHTS FOR APRIL 2021

### Producer Price Inflation Rate in April 2021 is 11.1%

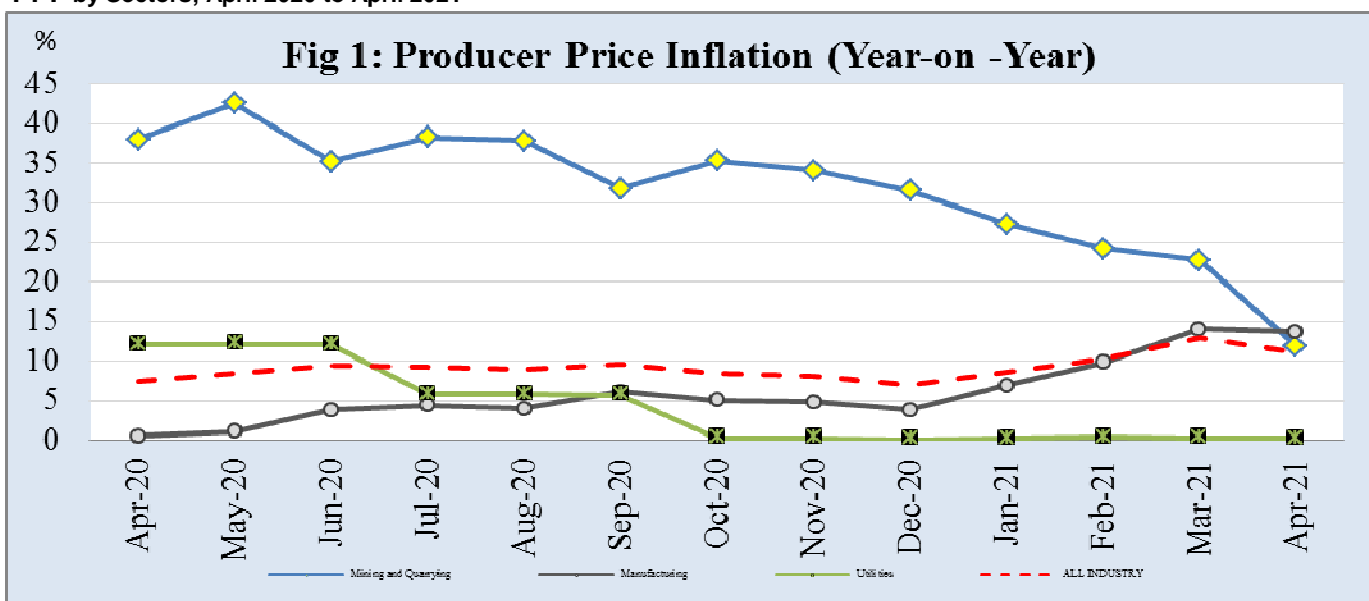
The Producer Price Index (PPI) measures the average change over time in the prices received by domestic producers for the production of their goods and services. The PPI for Ghana reports the producer price indices with reference to September 2006, the base period. This release shows the annual (year-on-year) and monthly producer inflation rates for all industry and three major sub-sectors of industry (Mining and Quarrying, Manufacturing and Utilities) for the last twelve months. The figures for the month of April 2021 are provisional, and are subject to revision when additional data become available. All other indicators are final.

The Producer Price Inflation rate for April 2021 was 11.1 percent. This rate indicates that between April 2020 and April 2021 (year-on-year), the PPI increased by 11.1 percent. This rate represents a 1.9 percentage point decrease in producer inflation relative to the rate recorded in March 2021 (13.0%). The month-on-month change in producer price index between March 2021 and April 2021 was -0.1 percent.

The producer price inflation in the Mining and Quarrying sub-sector decreased by 10.8 percentage points over the March 2021 rate of 22.7 percent to record 11.9 percent in April 2021. The producer inflation for the Manufacturing sub-sector, which constitutes more than two-thirds of the total industry, decreased by 0.4 percentage points to record 13.7 percent. The utility sub-sector recorded an inflation rate of 0.2 percent for April 2021 indicating a marginal decrease of 0.1 percentage point over the March rate of 0.3 percent.

In April 2021, five out of the sixteen major groups in the manufacturing sub-sector recorded inflation rates higher than the sector average of 13.7 percent. Manufacture of motor vehicles, trailers, and semi-trailers recorded the highest inflation rate of 37.3 percent, while the Manufacture of electrical machinery and apparatus n.e.c. and Manufacture of machinery and equipment n.e.c. recorded the least inflation rate of 0.0 percent

**PPI by Sectors; April 2020 to April 2021**



**Manufacture of coke, refined petroleum products etc:** Annual rate was 30.6 percent for April 2021, as compare to 31.0 percent in March 2021.

**Manufacture of other non-metallic mineral product:** Annual rate was 20.9 percent for April 2021, same as the rate recorded in March 2021.

**Manufacture of food products and beverages:** Annual rate was 6.6 percent in April 2021, as compared to 6.0 percent in March 2021.

**Electricity and Water Supply:** the inflation rate was 0.3 percent in April 2021, as compared to 0.2 percent in March 2021.

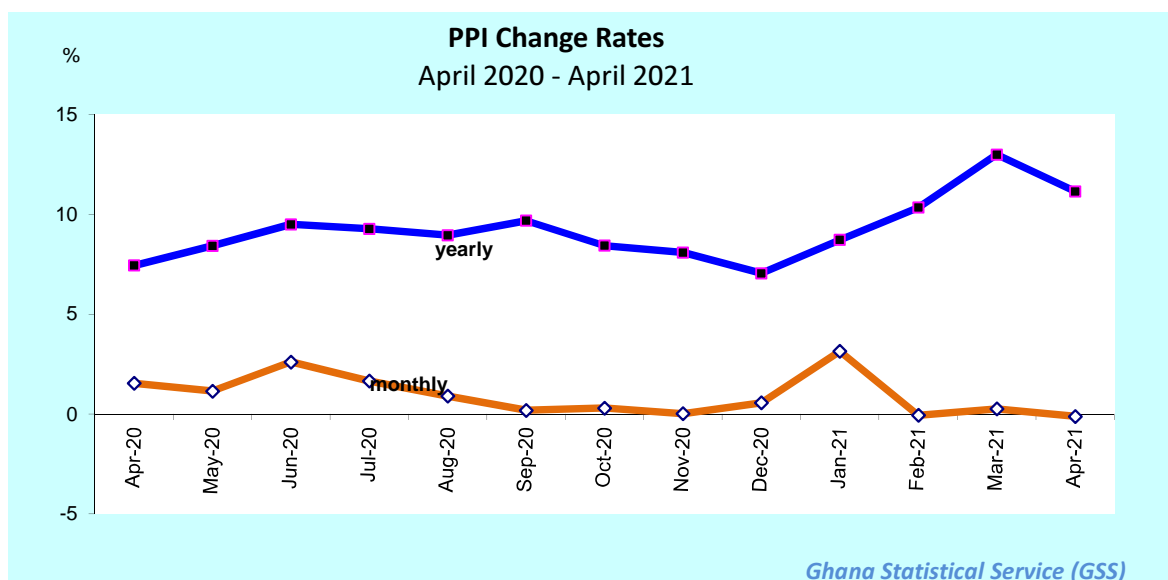
More detailed time series data is posted on the GSS website [[www.statsghana.gov.gh](http://www.statsghana.gov.gh)].

**The next release date is 16th June 2021**

**Table 1: Producer Price Index for April 2020 - April 2021**

Year / Month	Index level	Monthly	Yearly
	Sept 2006=100	Change Rate (%)	
April-20	673.4	1.5	7.4
May-20	681.2	1.2	8.4
June-20	699.0	2.6	9.5
July-20	710.6	1.7	9.3
August-20	717.0	0.9	9.0
September-20	718.4	0.2	9.7
October-20	720.6	0.3	8.4
November-20	720.8	0.0	8.1
December-20	724.9	0.6	7.0
January-21	747.7	3.1	8.7
February-21	747.3	-0.1	10.3
March-21	749.3	0.3	13.0
April-21	p 748.5	p -0.1	p 11.1

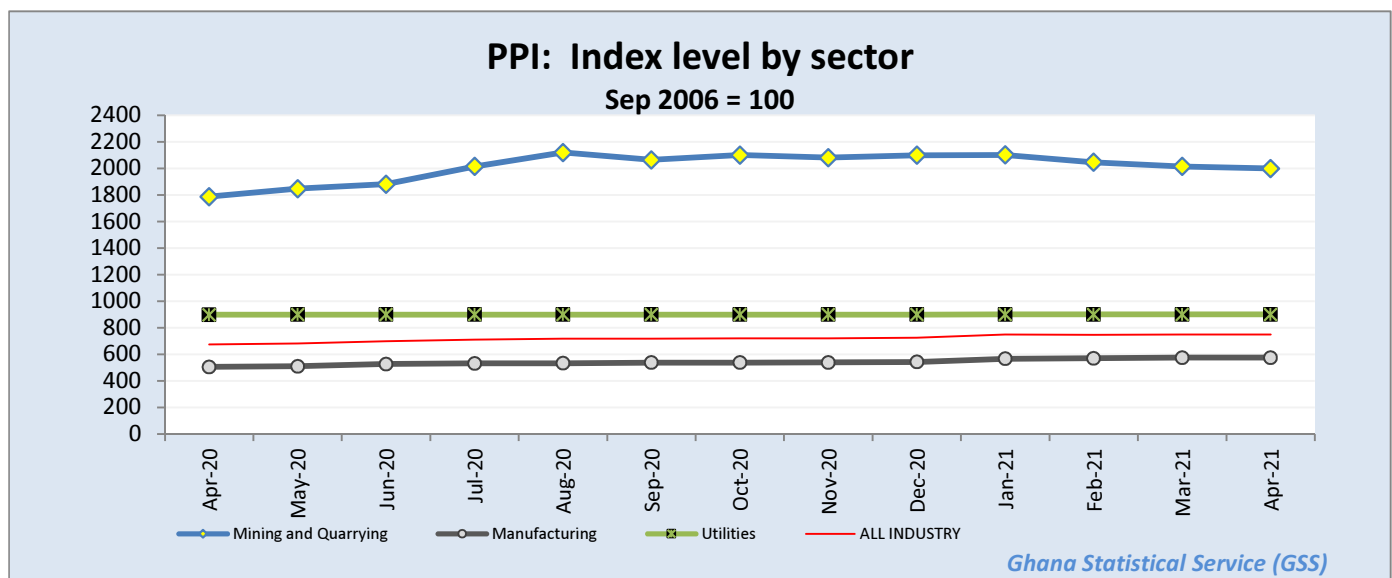
p: provisional



**Table 2: Producer Price Index (Sep.2006=100) by sectors for April 2020 - April 2021**

Year / Month	Mining and Quarrying	Manufacturing	Utilities	ALL INDUSTRY
<i>ISIC</i>	<i>C</i>	<i>D</i>	<i>E</i>	<i>C+D+E</i>
<i>weight</i>	13.97	69.75	16.28	100.00
April-2020	1,786.5	504.7	897.6	673.4
May-2020	1,847.3	509.3	898.3	681.2
June-2020	1,880.0	526.7	898.6	699.0
July-2020	2,014.6	531.2	898.8	710.6
August-2020	2,119.0	532.1	898.9	717.0
September-2020	2,063.5	536.8	898.9	718.4
October-2020	2,099.3	537.1	899.1	720.6
November-2020	2,080.4	538.4	899.1	720.8
December-2020	2,098.6	541.8	899.2	724.9
January-2021	2,101.5	566.7	899.5	747.7
February-2021	2,045.0	569.7	899.5	747.3
March-2021	2,013.8	574.0	899.2	749.3
April-2021	p 1,998.8	p 574.0	p 899.3	p 748.5

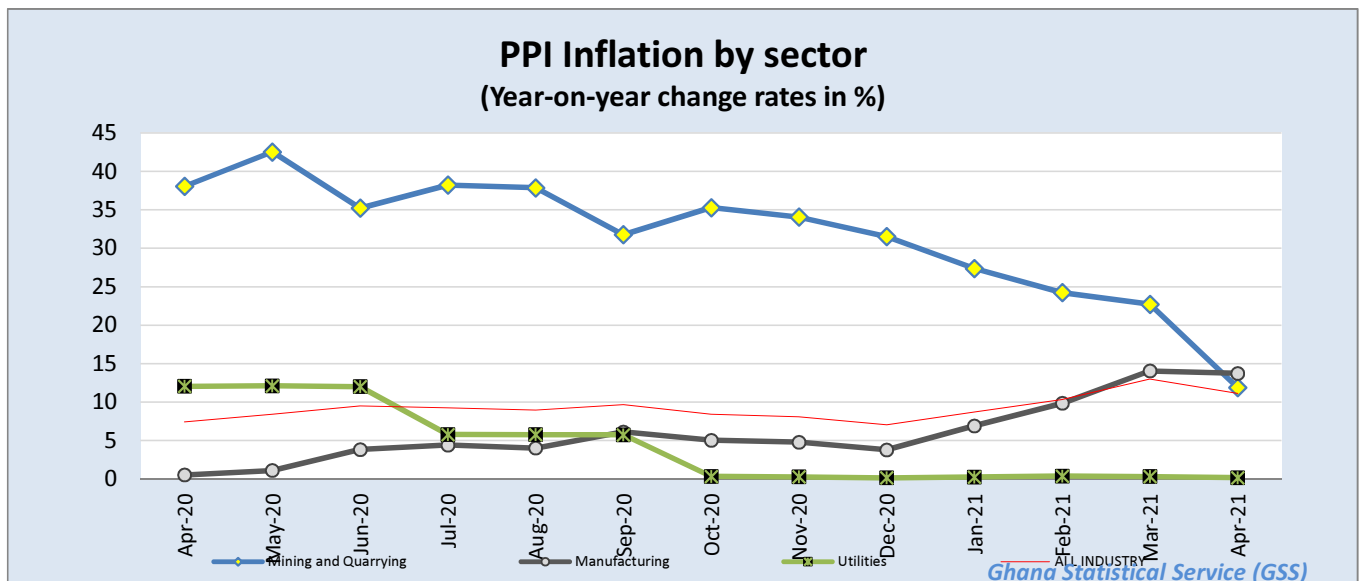
*p: provisional*



**Table 3: Producer Price Index: Yearly Change Rates by Sector for April 2020 - April 2021 (%)**

Year / Month	Mining and Quarrying	Manufacturing	Utilities	ALL INDUSTRY
ISIC	C	D	E	C+D+E
April-2020	38.0	0.5	12.1	<b>7.4</b>
May-2020	42.5	1.1	12.1	<b>8.4</b>
June-2020	35.2	3.8	12.0	<b>9.5</b>
July-2020	38.2	4.4	5.8	<b>9.3</b>
August-2020	37.9	4.0	5.8	<b>9.0</b>
September-2020	31.8	6.1	5.8	<b>9.7</b>
October-2020	35.3	5.1	0.3	<b>8.4</b>
November-2020	34.0	4.8	0.3	<b>8.1</b>
December-2020	31.5	3.8	0.2	<b>7.0</b>
January-2021	27.4	6.9	0.3	<b>8.7</b>
February-2021	24.2	9.8	0.4	<b>10.3</b>
March-2021	22.7	14.1	0.3	<b>13.0</b>
April-2021	p 11.9	p 13.7	p 0.2	<b>p 11.1</b>

*p: provisional*

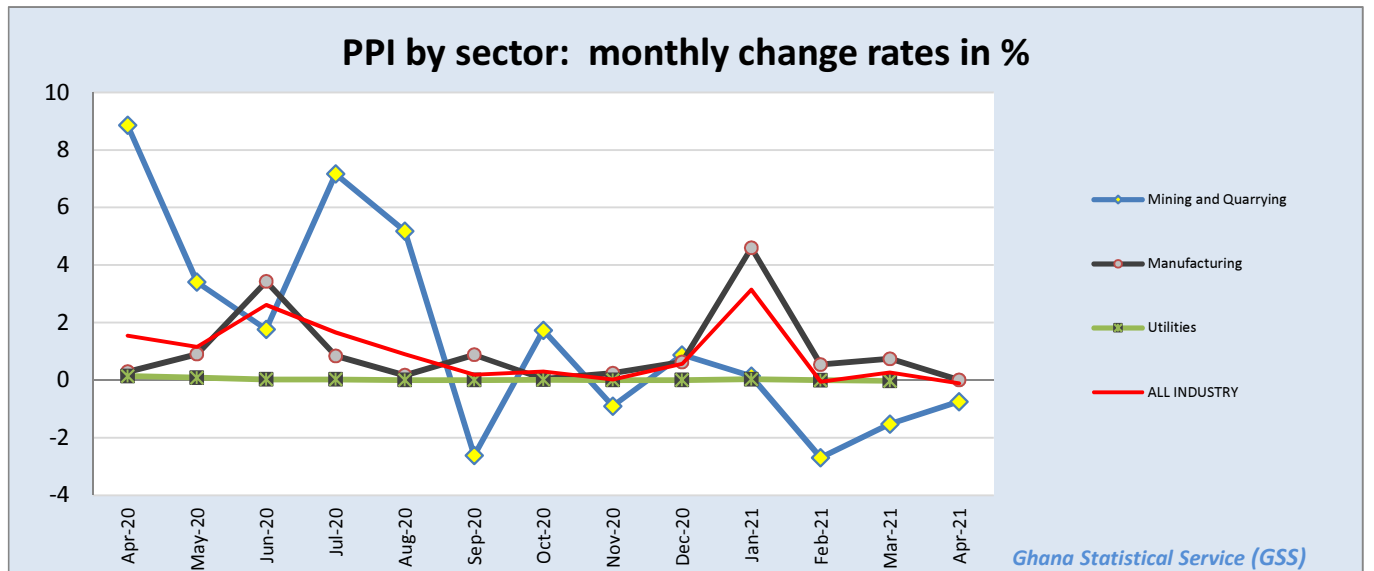




**Table 4: Producer Price Index: Monthly Change Rates by Sector for April 2020 - April 2021 (%)**

Year / Month	Mining and Quarrying	Manufacturing	Utilities	ALL INDUSTRY
<i>ISIC</i>	<i>C</i>	<i>D</i>	<i>E</i>	<i>C+D+E</i>
<i>weight</i>	13.97	69.75	16.28	100.00
April-2020	8.9	0.3	0.1	1.5
May-2020	3.4	0.9	0.1	1.2
June-2020	1.8	3.4	0.0	2.6
July-2020	7.2	0.8	0.0	1.7
August-2020	5.2	0.2	0.0	0.9
September-2020	-2.6	0.9	0.0	0.2
October-2020	1.7	0.1	0.0	0.3
November-2020	-0.9	0.2	0.0	0.0
December-2020	0.9	0.6	0.0	0.6
January-2021	0.1	4.6	0.0	3.1
February-2021	-2.7	0.5	-0.0	-0.1
March-2021	-1.5	0.7	-0.0	0.3
April-2021	p -0.7	p 0.0	p 0.0	p -0.1

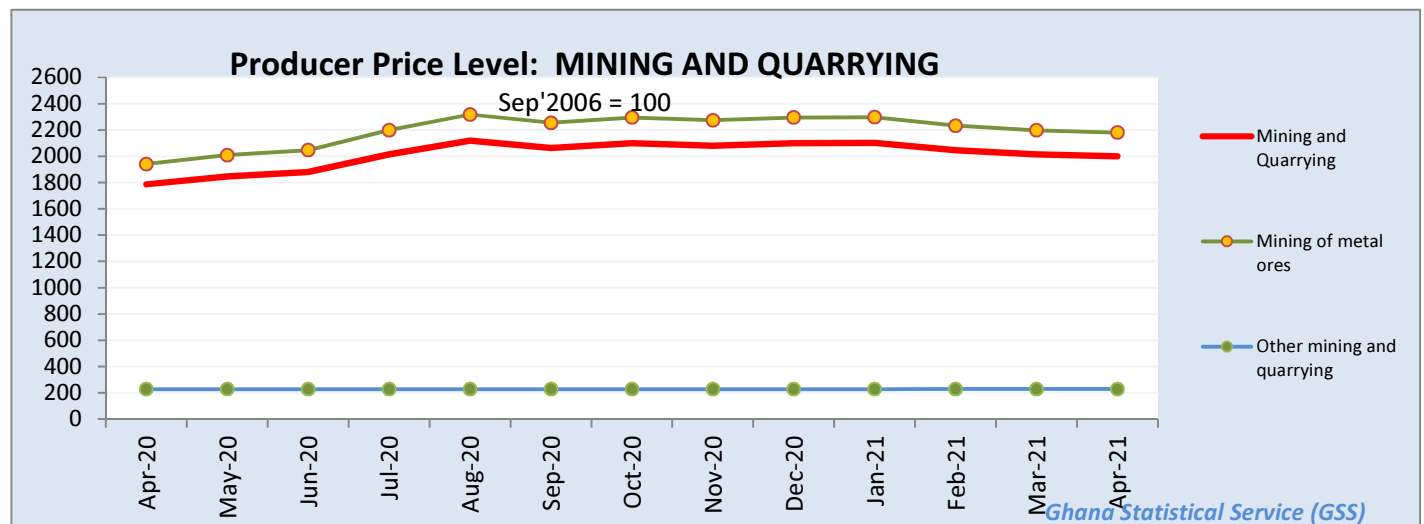
*p: provisional*



**Table 5: Mining And Quarrying: Producer Price Index (Sept 2006=100) April 2020 - April 2021**

Year / Month	Mining and Quarrying	Mining of metal ores	Mining of non-ferrous metal ores	Other mining and quarrying	Quarrying of stone, sand & clay	Mining and quarrying n.e.c.
ISIC	C	C13	C132	C14	C141	C142
April-2020	1786.5	1940.6	1940.6	227.5	184.4	519.3
May-2020	1847.3	2009.4	2009.4	227.5	184.4	519.3
June-2020	1880.0	2046.4	2046.4	227.5	184.4	519.3
July-2020	2014.6	2199.0	2199.0	227.5	184.4	519.3
August-2020	2119.0	2317.7	2317.7	227.5	184.4	519.3
September-2020	2063.5	2254.6	2254.6	227.5	184.4	519.3
October-2020	2099.3	2295.2	2295.2	227.5	184.4	519.3
November-2020	2080.4	2273.7	2273.7	227.5	184.4	519.3
December-2020	2098.6	2294.5	2294.5	227.5	184.4	519.3
January-2021	2101.5	2297.8	2297.8	227.5	184.4	519.3
February-2021	2045.0	2232.9	2232.9	229.0	185.9	519.3
March-2021	2013.8	2197.6	2197.6	229.0	185.9	519.3
April-2021	p 1998.8	p 2180.5	p 2180.5	p 229.0	p 185.9	p 519.3

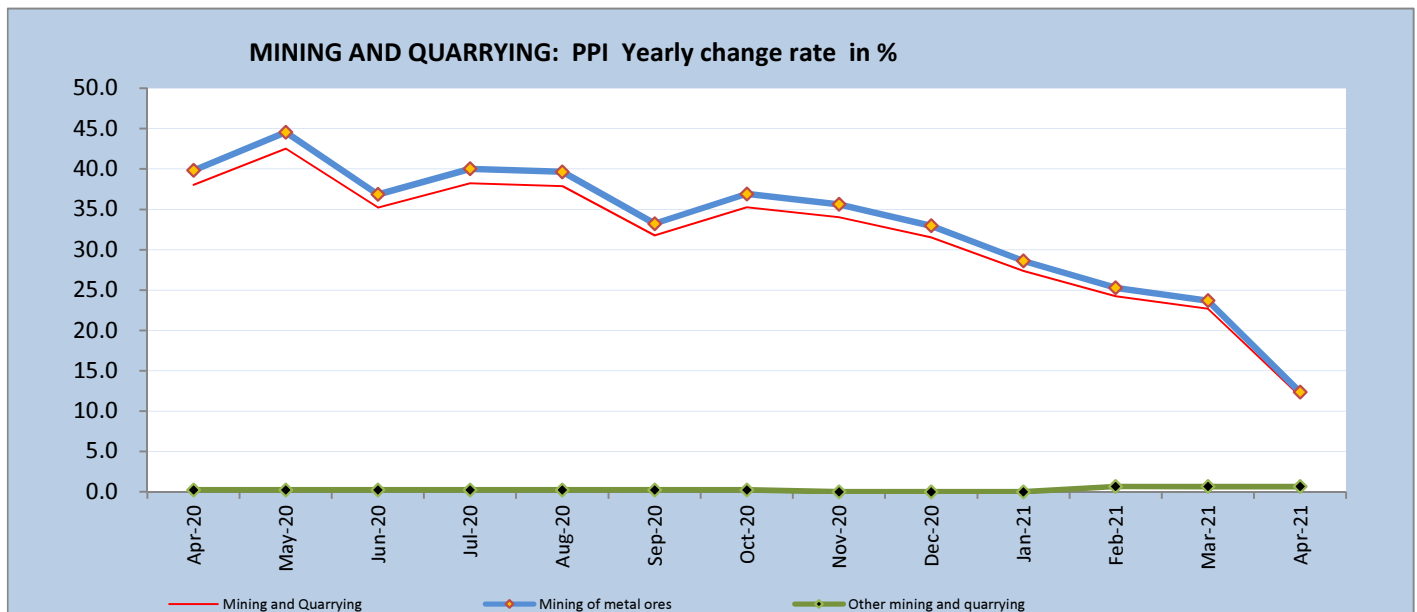
p: provisional



**Table 6: Mining and Quarrying: Yearly Change Rates for April 2020 - April 2021 (%)**

Year / Month	Mining and Quarrying	Mining of metal ores	Mining of non-ferrous metal ores	Other mining and quarrying	Quarrying of stone, sand & clay	Mining and quarrying n.e.c.
ISIC	C	C13	C132	C14	C141	C142
April-2020	38.0	39.8	39.8	0.2	0.3	0.0
May-2020	42.5	44.5	44.5	0.2	0.3	0.0
June-2020	35.2	36.9	36.9	0.2	0.3	0.0
July-2020	38.2	40.0	40.0	0.2	0.3	0.0
August-2020	37.9	39.6	39.6	0.2	0.3	0.0
September-2020	31.8	33.2	33.2	0.2	0.3	0.0
October-2020	35.3	36.9	36.9	0.2	0.3	0.0
November-2020	34.0	35.6	35.6	0.0	0.0	0.0
December-2020	31.5	33.0	33.0	0.0	0.0	0.0
January-2021	27.4	28.6	28.6	0.0	0.0	0.0
February-2021	24.2	25.3	25.3	0.7	0.8	0.0
March-2021	22.7	23.7	23.7	0.7	0.8	0.0
April-2021	p 11.9	p 12.4	p 12.4	p 0.7	p 0.8	p 0.0

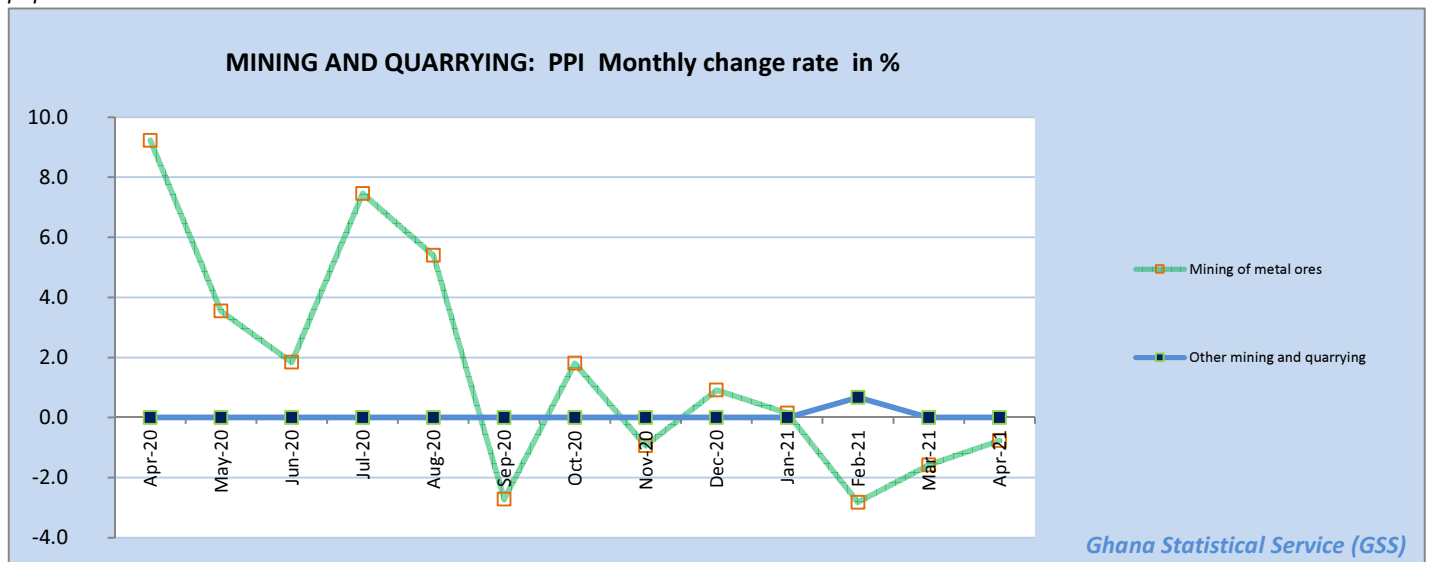
*p: provisional*



**Table 7: Mining and Quarrying: Monthly Change Rates for April 2020 - April 2021 (%)**

Year / Month	Mining and Quarrying	Mining of metal ores	Mining of non-ferrous metal ores	Other mining and quarrying	Quarrying of stone, sand & clay	Mining and quarrying n.e.c.
ISIC	C	C13	C132	C14	C141	C142
April-2020	8.9	9.2	9.2	0.0	0.0	0.0
May-2020	3.4	3.5	3.5	0.0	0.0	0.0
June-2020	1.8	1.8	1.8	0.0	0.0	0.0
July-2020	7.2	7.5	7.5	0.0	0.0	0.0
August-2020	5.2	5.4	5.4	0.0	0.0	0.0
September-2020	-2.6	-2.7	-2.7	0.0	0.0	0.0
October-2020	1.7	1.8	1.8	0.0	0.0	0.0
November-2020	-0.9	-0.9	-0.9	0.0	0.0	0.0
December-2020	0.9	0.9	0.9	0.0	0.0	0.0
January-2021	0.1	0.1	0.1	0.0	0.0	0.0
February-2021	-2.7	-2.8	-2.8	0.7	0.8	0.0
March-2021	-1.5	-1.6	-1.6	0.0	0.0	0.0
April-2021	p -0.7	p -0.8	p -0.8	p 0.0	p 0.0	p 0.0

*p: provisional*



**Table 8: Manufacturing Producer Price Index (Sept 2006=100) for April 2020 - April 2021**

Year / Month	<b>Manufacturing</b>	<b>Manufacture of food products and beverages</b>	Production, processing, preservation of meat, fish, fruit, vegetables, oils and fats	Manufacture of dairy products	Manufacture of grain mill products, starch products, and prepared animal feeds	Manufacture of other food products	Manufacture of beverages	<b>Manufacture of textiles</b>	Spinning, weaving and finishing of textiles
<i>ISIC</i>	<b>D</b>	<b>D15</b>	<i>D151</i>	<i>D152</i>	<i>D153</i>	<i>D154</i>	<i>D155</i>	<b>D17</b>	<i>D171</i>
<i>weight</i>	<b>100</b>	<b>25.64</b>	4.60	4.31	4.66	4.80	7.27	<b>4.27</b>	4.28
April-2020	504.7	505.1	759.7	460.8	580.3	608.4	375.2	620.1	620.1
May-2020	509.3	509.9	773.4	460.8	580.3	611.3	383.9	621.6	621.6
June-2020	526.7	506.8	736.9	460.8	584.0	612.2	383.9	627.6	627.6
July-2020	531.2	509.3	755.2	460.8	584.0	613.1	385.2	655.1	655.1
August-2020	532.1	510.3	762.6	460.8	584.0	616.6	385.2	656.4	656.4
September-2020	536.8	514.4	803.3	460.8	584.0	616.7	385.2	656.5	656.5
October-2020	537.1	514.7	805.8	460.8	584.0	617.2	385.2	656.5	656.5
November-2020	538.4	518.2	842.4	460.8	584.0	617.5	385.2	657.7	657.7
December-2020	541.8	530.4	863.4	486.4	585.6	634.6	385.2	658.1	658.1
January-2021	566.7	533.8	899.7	486.4	585.6	635.8	385.2	658.3	658.3
February-2021	569.7	535.9	903.6	486.4	598.2	633.2	385.2	658.1	658.1
March-2021	574.0	535.5	899.8	486.4	598.2	632.3	385.2	657.3	657.3
April-2021	p 574.0	p 535.5	p 900.2	p 486.4	p 598.2	p 632.4	p 385.2	p 657.6	p 657.6

*p: provisional*

**Table 8: Manufacturing Producer Price Index (Sept 2006=100) for April 2020 - April 2021**
*contd.*

Year / Month	Tanning of leather; manu facture of luggage, etc	Manufacture of footwear	Manufacture of wood an of articles of straw etc.	Sawmilling and planing of wood	Manufacture of products of wood, cork, straw etc.	Manufacture of paper and paper products	Manufacture of paper and paper products	Publishing, printing and reproduction of rec. media	Publishing	Printing and service activities ...
ISIC	D19	D192	D20	D201	D202	D21	D210	D22	D221	D222
weight	0.12	0.12	9.03	4.94	4.10	0.62	0.62	1.14	0.40	0.74
April-2020	546.3	546.3	357.3	376.2	309.0	564.0	564.0	794.0	665.2	874.5
May-2020	550.2	550.2	365.5	384.0	317.8	566.4	566.4	794.0	665.2	874.5
June-2020	550.2	550.2	365.7	384.0	318.5	566.7	566.7	794.0	665.2	874.5
July-2020	550.2	550.2	365.8	384.0	318.9	567.0	567.0	794.0	665.2	874.5
August-2020	550.2	550.2	365.9	384.0	318.9	567.1	567.1	794.0	665.2	874.5
September-2020	563.8	563.8	369.8	384.0	332.4	567.1	567.1	847.9	665.2	967.9
October-2020	563.8	563.8	369.8	384.0	332.2	588.0	588.0	847.9	665.2	967.9
November-2020	563.8	563.8	370.7	384.0	335.5	588.9	588.9	847.9	665.2	967.9
December-2020	563.8	563.8	370.9	384.0	336.0	590.6	590.6	847.9	665.2	967.9
January-2021	563.8	563.8	370.9	384.0	336.1	591.0	591.0	847.9	665.2	967.9
February-2021	603.9	603.9	371.1	384.0	336.8	617.9	617.9	847.9	665.2	967.9
March-2021	605.0	605.0	372.1	384.0	340.2	617.6	617.6	847.9	665.2	967.9
April-2021	p 605.0	p 605.0	p 372.1	p 384.0	p 340.3	p 618.1	p 618.1	p 847.9	p 665.2	p 967.9

*p: provisional*

**Table 8: Manufacturing Producer Price Index (Sept 2006=100) for April 2020 - April 2021**

*contd.*

Year / Month	Manufacture of coke, refined petroleum products etc.	Manufacture of refined petroleum products	Manufacture of chemicals and chemical products	Manufacture of basic chemicals	Manufacture of other chemical products	Manufacture of man-made fibres	Manufacture of rubber and plastics products	Manufacture of rubber products	Manufacture of plastics products
ISIC	D23	D232	D24	D241	D242	D243	D25	D251	D252
weight	22.94	22.94	10.15	0.54	9.45	0.16	3.90	0.76	3.14
April-2020	462.4	462.4	490.6	442.0	502.4	128.8	442.1	344.8	466.2
May-2020	463.0	463.0	490.7	445.8	502.4	128.8	443.2	348.1	466.5
June-2020	512.5	512.5	490.7	447.1	502.4	128.8	469.8	349.3	500.4
July-2020	512.7	512.7	492.2	448.3	503.9	128.8	512.1	350.3	555.2
August-2020	512.8	512.8	492.2	448.7	503.9	128.8	512.2	350.6	555.3
September-2020	512.8	512.8	515.3	448.9	528.3	128.8	512.3	350.8	555.3
October-2020	512.9	512.9	515.3	449.6	528.3	128.8	512.5	351.4	555.4
November-2020	512.9	512.9	515.3	449.9	528.3	128.8	514.1	357.7	555.4
December-2020	513.0	513.0	515.3	450.3	528.3	128.8	512.7	352.0	555.4
January-2021	594.6	594.6	515.3	451.9	528.3	128.8	513.2	353.4	555.6
February-2021	599.9	599.9	514.5	451.8	527.4	128.8	513.1	353.2	555.5
March-2021	604.0	604.0	515.3	450.6	528.3	128.8	507.4	331.6	555.4
April-2021	p 604.0	p 604.0	p 515.3	p 450.7	p 528.3	p 128.8	p 507.4	p 331.7	p 555.4

*p: provisional*

**Table 8: Manufacturing Producer Price Index (Sept 2006=100) for April 2020 - April 2021**
*contd.*

Year / Month	Manufacture of other non-metallic min. products	Manufacture of non-metallic mineral products n.e.c.	Manufacture of basic metals	Manufacture of basic iron and steel	Manufacture of basic precious and non-ferrous metals	Manufacture of fabricated metal products, ...	Manufacture of structural metal products, tanks, reservoirs ...	Manufacture of other fabricated metal products ...	Manufacture of machinery ... n.e.c.	Manufacture of special-purpose machinery
ISIC	D26	D269	D27	D271	D272	D28	D281	D289	D29	D292
weight	8.20	8.20	5.02	2.02	2.65	3.70	1.55	2.15	0.42	0.42
April-2020	548.3	548.3	530.8	600.4	483.2	741.5	572.0	893.3	1328.8	1328.8
May-2020	561.4	561.4	532.9	601.0	486.2	743.1	573.5	895.0	1328.8	1328.8
June-2020	603.4	603.4	533.6	601.1	487.2	743.4	573.5	895.6	1328.8	1328.8
July-2020	607.5	607.5	538.2	601.3	494.7	743.7	573.5	896.1	1328.8	1328.8
August-2020	607.6	607.6	547.8	625.8	495.0	747.9	573.5	904.8	1328.8	1328.8
September-2020	608.4	608.4	548.1	626.4	495.1	754.7	581.3	910.2	1328.8	1328.8
October-2020	608.5	608.5	548.5	626.5	495.6	754.9	581.3	910.5	1328.8	1328.8
November-2020	608.5	608.5	549.1	627.6	495.9	756.4	581.3	913.6	1328.8	1328.8
December-2020	608.6	608.6	548.9	626.6	496.2	755.0	581.3	910.9	1328.8	1328.8
January-2021	649.9	649.9	558.4	649.9	497.4	755.4	581.3	911.6	1328.8	1328.8
February-2021	651.8	651.8	558.3	649.9	497.3	766.5	602.0	911.5	1328.8	1328.8
March-2021	662.9	662.9	608.9	796.1	496.4	769.8	608.6	911.0	1328.8	1328.8
April-2021	p 662.9	p 662.9	p 608.9	p 796.1	p 496.5	p 769.8	p 608.6	p 911.1	p 1328.8	p 1328.8

*p: provisional*



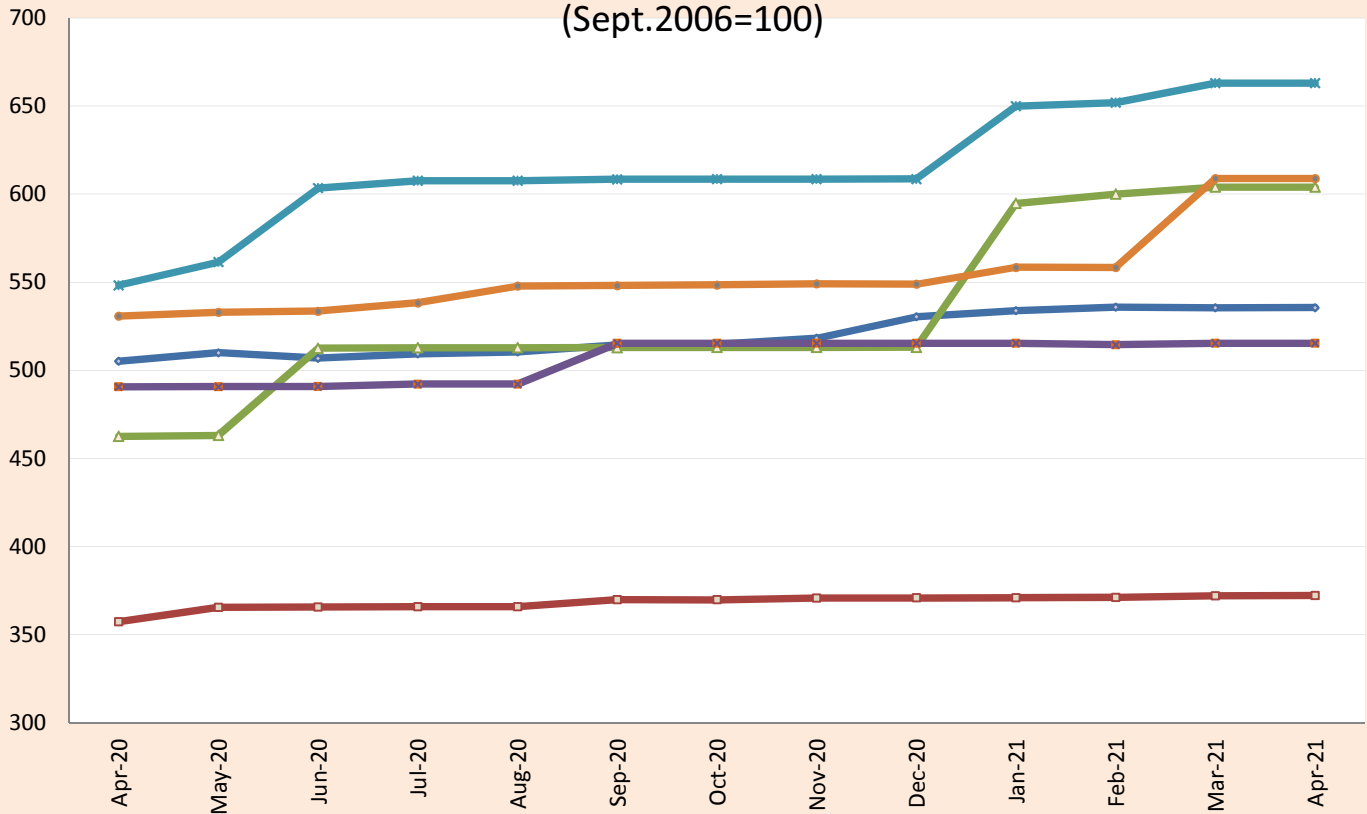
**Table 8: Manufacturing Producer Price Index (Sept 2006=100) for April 2020 - April 2021**

*contd.*

Year / Month	Manufacture of electrical machinery and apparatus n.e.c.	Manufacture of insulated wire and cable	Manufacture of motor vehicles, trailers and semi-trailers	Manufacture of bodies for motor vehicles, trailers and semi-trailers	Manufacture of furniture; manufacturing n.e.c.	Manufacture of furniture	Manufacturing n.e.c.
ISIC	D31	D313	D34	D342	D36	D361	D369
weight	0.41	0.41	0.05	0.05	2.44	2.33	0.11
April-2020	399.2	399.2	581.0	581.0	737.7	735.4	818.1
May-2020	399.3	399.3	606.2	606.2	776.2	774.9	823.0
June-2020	399.3	399.3	627.0	627.0	776.2	774.9	823.0
July-2020	399.3	399.3	641.5	641.5	779.4	778.1	823.0
August-2020	399.3	399.3	663.7	663.7	779.4	778.1	823.0
September-2020	399.3	399.3	666.2	666.2	783.1	779.7	908.6
October-2020	399.3	399.3	662.4	662.4	783.4	778.1	988.6
November-2020	399.3	399.3	785.3	785.3	783.4	778.1	988.6
December-2020	399.3	399.3	809.1	809.1	786.3	781.1	988.6
January-2021	399.3	399.3	813.7	813.7	786.3	781.1	988.6
February-2021	399.3	399.3	808.8	808.8	822.2	817.6	997.2
March-2021	399.3	399.3	791.5	791.5	822.2	817.6	997.2
April-2021	p 399.3	p 399.3	p 797.7	p 797.7	p 822.2	p 817.6	p 997.2

*p: provisional*

### PPI for Selected Subgroups in the Manufacturing Sector (Sept.2006=100)



*Ghana Statistical Service (GSS)*

**Table 9: Manufacturing: Yearly Change Rates for April 2020 - April 2021 (%)**

Year / Month	<b>Manufacturing</b>	<b>Manufacture of food products and beverages</b>	Production, processing, preservation of meat, fish, fruit, vegetables, oils and fats	Manufacture of dairy products	Manufacture of grain mill products, starch products, and prepared animal feeds	Manufacture of other food products	Manufacture of beverages	<b>Manufacture of textiles</b>	Spinning, weaving and finishing of textiles
<i>ISIC</i>	<b>D</b>	<b>D15</b>	D151	D152	D153	D154	D155	<b>D17</b>	D171
<i>weight</i>	<b>100</b>	<b>25.64</b>	4.60	4.31	4.66	4.80	7.27	<b>4.27</b>	4.28
April-2020	0.5	9.5	19.2	18.9	0.4	4.7	2.8	0.6	0.6
May-2020	1.1	9.6	20.5	18.9	0.4	5.2	2.3	0.8	0.8
June-2020	3.8	8.5	13.6	18.9	1.0	3.1	2.3	1.6	1.6
July-2020	4.4	9.0	16.5	18.9	1.0	3.2	2.7	6.1	6.1
August-2020	4.0	9.1	16.7	18.9	1.0	3.7	2.7	6.3	6.3
September-2020	6.1	9.6	20.3	18.9	1.0	3.5	2.7	6.3	6.3
October-2020	5.1	9.5	19.9	18.9	1.0	3.4	2.7	6.3	6.3
November-2020	4.8	9.2	18.5	18.9	0.6	3.1	2.7	6.4	6.4
December-2020	3.8	4.8	12.6	5.6	0.9	4.2	2.7	6.3	6.3
January-2021	6.9	5.4	16.2	5.6	0.9	4.8	2.7	6.4	6.4
February-2021	9.8	6.9	24.3	5.6	3.1	5.1	2.7	6.7	6.7
March-2021	14.1	6.6	22.2	5.6	3.1	4.8	2.7	6.4	6.4
April-2021	p 13.7	p 6.0	p 18.5	p 5.6	p 3.1	p 3.9	p 2.7	p 6.0	p 6.0

*p: provisional*

**Table 9: Manufacturing: Yearly Change Rates for April 2020 - April 2021 (%)**

*contd.*

Year / Month	Tanning of leather; manufacture of luggage, etc	Manufacture of footwear	Manufacture of wood and of articles of straw etc.	Sawmilling and planing of wood	Manufacture of products of wood, cork, straw etc.	Manufacture of paper and paper products	Manufacture of paper and paper products	Publishing, printing and reproduction of rec. media	Publishing	Printing and service activities ...
<i>ISIC</i>	<b>D19</b>	<i>D192</i>	<b>D20</b>	<i>D201</i>	<i>D202</i>	<b>D21</b>	<i>D210</i>	<b>D22</b>	<i>D221</i>	<i>D222</i>
<i>weight</i>	<b>0.12</b>	<i>0.12</i>	<b>9.03</b>	<i>4.94</i>	<i>4.10</i>	<b>0.62</b>	<i>0.62</i>	<b>1.14</b>	<i>0.40</i>	<i>0.74</i>
April-2020	2.3	2.3	0.7	0.0	2.6	5.7	5.7	1.5	0.0	2.4
May-2020	3.1	3.1	3.0	2.1	5.5	1.5	1.5	1.5	0.0	2.4
June-2020	3.1	3.1	3.0	2.1	5.6	5.9	5.9	0.0	0.0	0.0
July-2020	3.1	3.1	3.0	2.1	5.7	1.0	1.0	0.0	0.0	0.0
August-2020	3.1	3.1	3.0	2.1	5.8	0.9	0.9	0.0	0.0	0.0
September-2020	5.6	5.6	4.1	2.1	10.2	0.9	0.9	6.8	0.0	10.7
October-2020	5.6	5.6	4.1	2.1	10.1	4.6	4.6	6.8	0.0	10.7
November-2020	3.5	3.5	3.7	2.1	8.5	4.6	4.6	6.8	0.0	10.7
December-2020	3.5	3.5	3.7	2.1	8.5	4.6	4.6	6.8	0.0	10.7
January-2021	3.5	3.5	3.8	2.1	8.6	4.9	4.9	6.8	0.0	10.7
February-2021	10.5	10.5	3.9	2.1	9.1	9.9	9.9	6.8	0.0	10.7
March-2021	10.7	10.7	4.1	2.1	10.0	9.8	9.8	6.8	0.0	10.7
April-2021	p 10.7	p 10.7	p 4.1	p 2.1	p 10.1	p 9.6	p 9.6	p 6.8	p 0.0	p 10.7

*p: provisional*

**Table 9: Manufacturing: Yearly Change Rates for April 2020 - April 2021 (%)**

*contd.*

Year / Month	Manufacture of coke, refined petroleum products etc.	Manufacture of refined petroleum products	Manufacture of chemicals and chemical products	Manufacture of basic chemicals	Manufacture of other chemical products	Manufacture of man-made fibres	Manufacture of rubber and plastic products	Manufacture of rubber products	Manufacture of plastics products
ISIC	D23	D232	D24	D241	D242	D243	D25	D251	D252
weight	22.94	22.94	10.15	0.54	9.45	0.16	3.90	0.76	3.14
April-2020	-15.3	-15.3	1.2	4.2	1.2	0.0	1.1	4.6	0.3
May-2020	-15.4	-15.4	1.2	4.9	1.2	0.0	1.3	5.4	0.4
June-2020	-4.5	-4.5	1.2	3.8	1.2	0.0	7.0	4.2	7.6
July-2020	-4.0	-4.0	0.3	4.0	0.3	0.0	16.6	4.4	19.3
August-2020	-5.4	-5.4	0.3	3.9	0.3	0.0	16.5	4.3	19.3
September-2020	-0.3	-0.3	5.0	3.7	5.2	0.0	16.5	4.0	19.3
October-2020	-4.6	-4.6	5.0	3.6	5.2	0.0	16.5	3.9	19.3
November-2020	-5.0	-5.0	5.0	3.0	5.2	0.0	16.8	6.0	19.3
December-2020	-4.0	-4.0	5.0	1.7	5.2	0.0	16.1	2.7	19.1
January-2021	4.4	4.4	5.0	2.7	5.2	0.0	16.4	3.9	19.2
February-2021	13.7	13.7	4.9	4.1	5.0	0.0	16.8	5.5	19.4
March-2021	31.0	31.0	5.0	3.5	5.2	0.0	15.2	-2.2	19.3
April-2021	p 30.6	p 30.6	p 5.0	p 2.0	p 5.2	p 0.0	p 14.8	-p 3.8	p 19.1

*p: provisional*

**Table 9: Manufacturing: Yearly Change Rates for April 2020 - April 2021 (%)**

*contd.*

Year / Month	Manufacture of other non-metallic min. products	Manufacture of non-metallic mineral products n.e.c.	Manufacture of basic metals	Manufacture of basic iron and steel	Manufacture of basic precious and non-ferrous metals	Manufacture of fabricated metal products, ...	Manufacture of structural metal products, tanks, reservoirs ...	Manufacture of other fabricated metal products ...	Manufacture of machinery ... n.e.c.	Manufacture of special-purpose machinery
<i>ISIC</i>	<b>D26</b>	D269	<b>D27</b>	D271	D272	<b>D28</b>	D281	D289	<b>D29</b>	D292
<i>weight</i>	<b>8.20</b>	8.20	<b>5.02</b>	2.02	2.65	<b>3.70</b>	1.55	2.15	<b>0.42</b>	0.42
April-2020	9.9	9.9	2.5	2.2	2.7	9.4	2.9	14.3	24.7	24.7
May-2020	12.7	12.7	3.0	2.3	3.5	9.6	3.1	14.5	24.7	24.7
June-2020	12.1	12.1	2.3	2.2	2.5	7.3	3.1	10.3	0.0	0.0
July-2020	11.0	11.0	2.6	0.5	4.2	6.6	3.1	9.1	0.0	0.0
August-2020	11.0	11.0	4.3	4.6	4.1	2.9	3.1	2.7	0.0	0.0
September-2020	11.1	11.1	4.3	4.7	4.0	3.8	4.5	3.2	0.0	0.0
October-2020	11.1	11.1	4.2	4.7	3.9	3.7	4.5	3.1	0.0	0.0
November-2020	11.1	11.1	4.1	4.8	3.5	2.6	1.6	3.1	0.0	0.0
December-2020	10.9	10.9	3.4	4.5	2.5	2.4	1.6	2.7	0.0	0.0
January-2021	18.5	18.5	5.5	8.4	3.3	2.0	1.6	2.4	0.0	0.0
February-2021	19.1	19.1	6.1	8.5	4.3	3.6	5.2	2.4	0.0	0.0
March-2021	20.9	20.9	15.5	32.8	3.8	4.0	6.4	2.3	0.0	0.0
April-2021	p 20.9	p 20.9	p 14.7	p 32.6	p 2.8	p 3.8	p 6.4	p 2.0	p 0.0	p 0.0

*p: provisional*

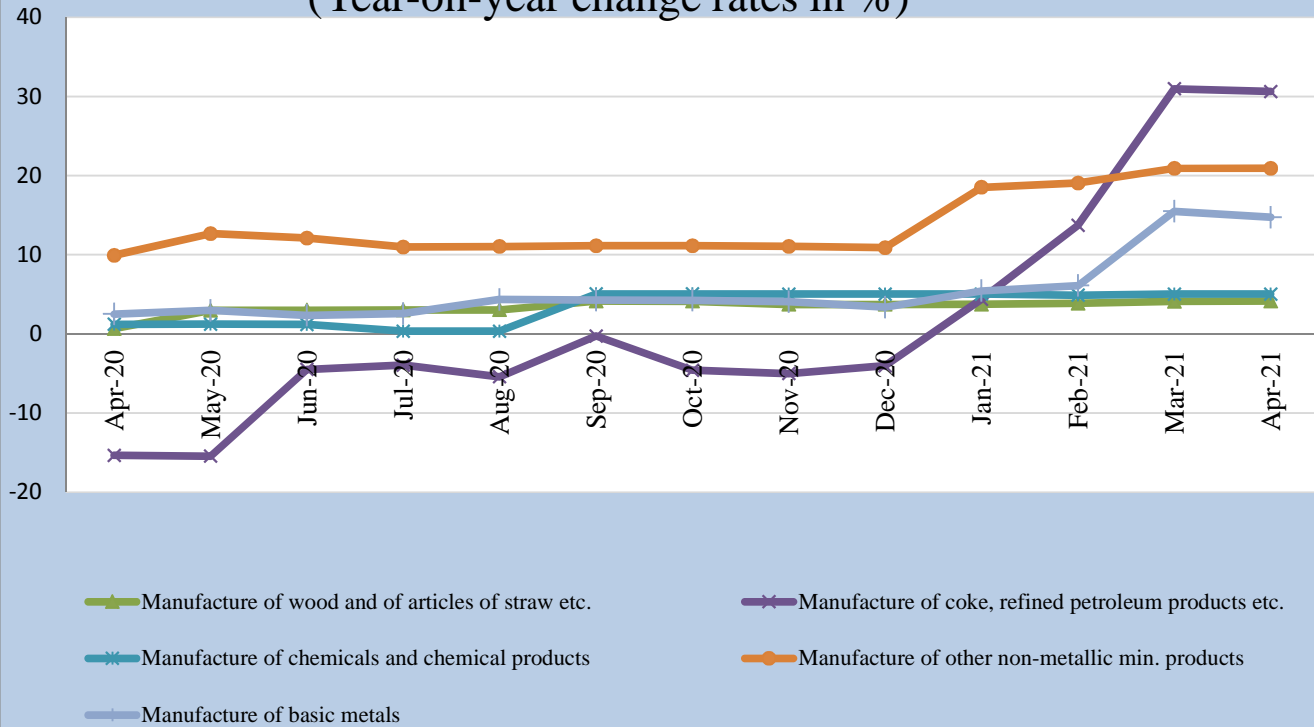
**Table 9: Manufacturing: Yearly Change Rates for April 2020 - April 2021 (%)**

*contd.*

Year / Month	Manufacture of electrical machinery and apparatus n.e.c.	Manufacture of insulated wire and cable	Manufacture of motor vehicles, trailers and semi-trailers	Manufacture of bodies for motor vehicles, trailers and semi-trailers	Manufacture of furniture; manufacturing n.e.c.	Manufacture of furniture	Manufacturing n.e.c.
<i>ISIC</i>	<i>D31</i>	<i>D313</i>	<i>D34</i>	<i>D342</i>	<i>D36</i>	<i>D361</i>	<i>D369</i>
<i>weight</i>	<b>0.41</b>	<i>0.41</i>	<b>0.05</b>	<i>0.05</i>	<b>2.44</b>	<i>2.33</i>	<i>0.11</i>
April-2020	3.1	3.1	4.0	4.0	1.4	1.5	0.0
May-2020	3.1	3.1	8.5	8.5	6.7	6.9	0.6
June-2020	3.1	3.1	8.4	8.4	6.7	6.9	0.6
July-2020	3.1	3.1	11.4	11.4	7.2	7.4	0.6
August-2020	3.1	3.1	15.9	15.9	7.1	7.3	0.6
September-2020	3.1	3.1	16.6	16.6	7.7	7.6	11.1
October-2020	3.1	3.1	15.3	15.3	7.7	7.3	20.8
November-2020	3.1	3.1	35.0	35.0	7.7	7.3	20.8
December-2020	0.0	0.0	34.5	34.5	8.1	7.8	20.8
January-2021	0.0	0.0	37.7	37.7	6.6	6.2	20.8
February-2021	0.1	0.1	40.6	40.6	11.5	11.2	21.9
March-2021	0.0	0.0	35.1	35.1	11.5	11.2	21.9
April-2021	p 0.0	p 0.0	p 37.3	p 37.3	p 11.5	p 11.2	p 21.9

*p: provisional*

## PPI Inflation for selected subgroups in the Manufacturing Sector (Year-on-year change rates in %)



Ghana Statistical Service (GSS)



**Table 10: Manufacturing: Monthly Change Rates for April 2020 - April 2021 (%)**

Year / Month	Manufacturing	Manufacture of food products and beverages	Production, processing, preservation of meat, fish, fruit, vegetables, oils and fats	Manufacture of dairy products	Manufacture of grain mill products, starch products, and prepared animal feeds	Manufacture of other food products	Manufacture of beverages	Manufacture of textiles	Spinning, weaving and finishing of textiles
<i>ISIC</i>	<i>D</i>	<i>D15</i>	<i>D151</i>	<i>D152</i>	<i>D153</i>	<i>D154</i>	<i>D155</i>	<i>D17</i>	<i>D171</i>
<i>weight</i>	<b>100</b>	<b>25.64</b>	<b>4.60</b>	<b>4.31</b>	<b>4.66</b>	<b>4.80</b>	<b>7.27</b>	<b>4.27</b>	<b>4.28</b>
April-2020	0.3	0.6	3.1	0.0	0.0	0.8	0.0	0.4	0.4
May-2020	0.9	1.0	1.8	0.0	0.0	0.5	2.3	0.2	0.2
June-2020	3.4	-0.6	-4.7	0.0	0.6	0.2	0.0	1.0	1.0
July-2020	0.8	0.5	2.5	0.0	0.0	0.1	0.3	4.4	4.4
August-2020	0.2	0.2	1.0	0.0	0.0	0.6	0.0	0.2	0.2
September-2020	0.9	0.8	5.3	0.0	0.0	0.0	0.0	0.0	0.0
October-2020	0.1	0.1	0.3	0.0	0.0	0.1	0.0	0.0	0.0
November-2020	0.2	0.7	4.5	0.0	0.0	0.0	0.0	0.2	0.2
December-2020	0.6	2.3	2.5	5.6	0.3	2.8	0.0	0.1	0.1
January-2021	4.6	0.7	4.2	0.0	0.0	0.2	0.0	0.0	0.0
February-2021	0.5	0.4	0.4	0.0	2.2	-0.4	0.0	0.0	0.0
March-2021	0.7	-0.1	-0.4	0.0	0.0	-0.1	0.0	-0.1	-0.1
April-2021	p 0.0	p 0.0	p 0.0	p 0.0	p 0.0	p 0.0	p 0.0	p 0.0	p 0.0

*p: provisional*

**Table 10: Manufacturing: Monthly Change Rates for April 2020 - April 2021 (%)**

*contd.*

Year / Month	Tanning of leather; manu facture of luggage, etc	Manufacture of footwear	Manufacture of wood an of articles of straw etc.	Sawmilling and planing of wood	Manufacture of products of wood, cork, straw etc.	Manufacture of paper and paper products	Manufacture of paper and paper products	Publishing, printing and reproduction of rec. media	Publishing	Printing and service activities ...
<i>ISIC</i>	<b>D19</b>	<i>D192</i>	<b>D20</b>	<i>D201</i>	<i>D202</i>	<b>D21</b>	<i>D210</i>	<b>D22</b>	<i>D221</i>	<i>D222</i>
<i>weight</i>	<b>0.12</b>	<i>0.12</i>	<b>9.03</b>	<i>4.94</i>	<i>4.10</i>	<b>0.62</b>	<i>0.62</i>	<b>1.14</b>	<i>0.40</i>	<i>0.74</i>
April-2020	0.0	0.0	0.0	0.0	0.0	0.3	0.3	0.0	0.0	0.0
May-2020	0.7	0.7	2.3	2.1	2.9	0.4	0.4	0.0	0.0	0.0
June-2020	0.0	0.0	0.1	0.0	0.2	0.1	0.1	0.0	0.0	0.0
July-2020	0.0	0.0	0.0	0.0	0.1	0.1	0.1	0.0	0.0	0.0
August-2020	0.0	0.0	0.0	0.0	0.0	0.0	0.0	0.0	0.0	0.0
September-2020	2.5	2.5	1.1	0.0	4.2	0.0	0.0	6.8	0.0	10.7
October-2020	0.0	0.0	0.0	0.0	0.0	3.7	3.7	0.0	0.0	0.0
November-2020	0.0	0.0	0.3	0.0	1.0	0.2	0.2	0.0	0.0	0.0
December-2020	0.0	0.0	0.0	0.0	0.2	0.3	0.3	0.0	0.0	0.0
January-2021	0.0	0.0	0.0	0.0	0.0	0.1	0.1	0.0	0.0	0.0
February-2021	7.1	7.1	0.1	0.0	0.2	4.6	4.6	0.0	0.0	0.0
March-2021	0.2	0.2	0.3	0.0	1.0	-0.1	-0.1	0.0	0.0	0.0
April-2021	p 0.0	p 0.0	p 0.0	p 0.0	p 0.0	p 0.1	p 0.1	p 0.0	p 0.0	p 0.0

*p: provisional*

**Table 10: Manufacturing: Monthly Change Rates for April 2020 - April 2021 (%)**

*contd.*

Year / Month	Manufacture of coke, refined petroleum products etc.	Manufacture of refined petroleum products	Manufacture of chemicals and chemical products	Manufacture of basic chemicals	Manufacture of other chemical products	Manufacture of man-made fibres	Manufacture of rubber and plastics products	Manufacture of rubber products	Manufacture of plastics products
<i>ISIC</i>	<b>D23</b>	<i>D232</i>	<b>D24</b>	<i>D241</i>	<i>D242</i>	<i>D243</i>	<b>D25</b>	<i>D251</i>	<i>D252</i>
<i>weight</i>	<b>22.94</b>	<i>22.94</i>	<b>10.15</b>	<i>0.54</i>	<i>9.45</i>	<i>0.16</i>	<b>3.90</b>	<i>0.76</i>	<i>3.14</i>
April-2020	0.3	0.3	0.0	1.5	0.0	0.0	0.4	1.7	0.1
May-2020	0.1	0.1	0.0	0.9	0.0	0.0	0.2	1.0	0.1
June-2020	10.7	10.7	0.0	0.3	0.0	0.0	6.0	0.3	7.3
July-2020	0.0	0.0	0.3	0.3	0.3	0.0	9.0	0.3	11.0
August-2020	0.0	0.0	0.0	0.1	0.0	0.0	0.0	0.1	0.0
September-2020	0.0	0.0	4.7	0.0	4.8	0.0	0.0	0.0	0.0
October-2020	0.0	0.0	0.0	0.1	0.0	0.0	0.0	0.2	0.0
November-2020	0.0	0.0	0.0	0.1	0.0	0.0	0.3	1.8	0.0
December-2020	0.0	0.0	0.0	0.1	0.0	0.0	-0.3	-1.6	0.0
January-2021	15.9	15.9	0.0	0.4	0.0	0.0	0.1	0.4	0.0
February-2021	0.9	0.9	-0.2	0.0	-0.2	0.0	0.0	0.0	0.0
March-2021	0.7	0.7	0.2	-0.3	0.2	0.0	-1.1	-6.1	0.0
April-2021	p 0.0	p 0.0	p 0.0	p 0.0	p 0.0	p 0.0	p 0.0	p 0.0	p 0.0

*p: provisional*

**Table 10: Manufacturing: Monthly Change Rates for April 2020 - April 2021 (%)**

*contd.*

Year / Month	Manufacture of other non-metallic min. products	Manufacture of non-metallic mineral products n.e.c.	Manufacture of basic metals	Manufacture of basic iron and steel	Manufacture of basic precious and non-ferrous metals	Manufacture of fabricated metal products, ...	Manufacture of structural metal products, tanks, reservoirs ...	Manufacture of other fabricated metal products ...	Manufacture of machinery ... n.e.c.	Manufacture of special-purpose machinery
<i>ISIC</i>	<b>D26</b>	<i>D269</i>	<b>D27</b>	<i>D271</i>	<i>D272</i>	<b>D28</b>	<i>D281</i>	<i>D289</i>	<b>D29</b>	<i>D292</i>
<i>weight</i>	<b>8.20</b>	8.20	<b>5.02</b>	2.02	2.65	<b>3.70</b>	1.55	2.15	<b>0.42</b>	0.42
April-2020	0.0	0.0	0.7	0.2	1.1	0.2	0.0	0.3	0.0	0.0
May-2020	2.4	2.4	0.4	0.1	0.6	0.2	0.3	0.2	0.0	0.0
June-2020	7.5	7.5	0.1	0.0	0.2	0.0	0.0	0.1	0.0	0.0
July-2020	0.7	0.7	0.9	0.0	1.5	0.0	0.0	0.1	0.0	0.0
August-2020	0.0	0.0	1.8	4.1	0.1	0.6	0.0	1.0	0.0	0.0
September-2020	0.1	0.1	0.1	0.1	0.0	0.9	1.4	0.6	0.0	0.0
October-2020	0.0	0.0	0.1	0.0	0.1	0.0	0.0	0.0	0.0	0.0
November-2020	0.0	0.0	0.1	0.2	0.1	0.2	0.0	0.3	0.0	0.0
December-2020	0.0	0.0	0.0	-0.2	0.1	-0.2	0.0	-0.3	0.0	0.0
January-2021	6.8	6.8	1.7	3.7	0.3	0.0	0.0	0.1	0.0	0.0
February-2021	0.3	0.3	0.0	0.0	0.0	1.5	3.6	0.0	0.0	0.0
March-2021	1.7	1.7	9.1	22.5	-0.2	0.4	1.1	-0.1	0.0	0.0
April-2021	p 0.0	p 0.0	p 0.0	p 0.0	p 0.0	p 0.0	p 0.0	p 0.0	p 0.0	p 0.0

*p: provisional*

**Table 10: Manufacturing: Monthly Change Rates for April 2020 - April 2021 (%)**

*contd.*

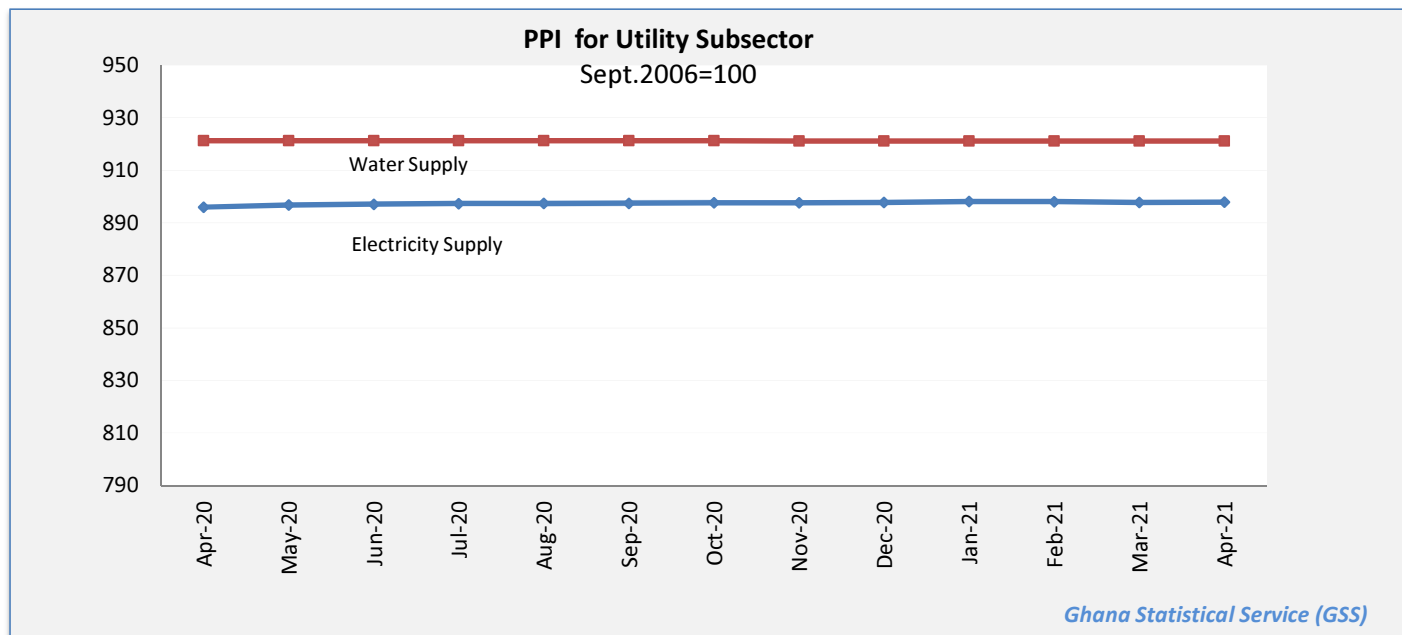
Year / Month	Manufacture of electrical machinery and apparatus n.e.c.	Manufacture of insulated wire and cable	Manufacture of motor vehicles, trailers and semi-trailers	Manufacture of bodies for motor vehicles, trailers and semi-trailers	Manufacture of furniture; manufacturing n.e.c.	Manufacture of furniture	Manufacturing n.e.c.
<i>ISIC</i>	<b>D31</b>	<i>D313</i>	<b>D34</b>	<i>D342</i>	<b>D36</b>	<i>D361</i>	<i>D369</i>
<i>weight</i>	<b>0.41</b>	<i>0.41</i>	<b>0.05</b>	<i>0.05</i>	<b>2.44</b>	<i>2.33</i>	<i>0.11</i>
April-2020	0.0	0.0	-0.9	-0.9	0.0	0.0	0.0
May-2020	0.0	0.0	4.3	4.3	5.2	5.4	0.6
June-2020	0.0	0.0	3.4	3.4	0.0	0.0	0.0
July-2020	0.0	0.0	2.3	2.3	0.4	0.4	0.0
August-2020	0.0	0.0	3.5	3.5	0.0	0.0	0.0
September-2020	0.0	0.0	0.4	0.4	0.5	0.2	10.4
October-2020	0.0	0.0	-0.6	-0.6	0.0	-0.2	8.8
November-2020	0.0	0.0	18.5	18.5	0.0	0.0	0.0
December-2020	0.0	0.0	3.0	3.0	0.4	0.4	0.0
January-2021	0.0	0.0	0.6	0.6	0.0	0.0	0.0
February-2021	0.0	0.0	-0.6	-0.6	4.6	4.7	0.9
March-2021	0.0	0.0	-2.1	-2.1	0.0	0.0	0.0
April-2021	p 0.0	p 0.0	p 0.8	p 0.8	p 0.0	p 0.0	p 0.0

*p: provisional*

**Table 11: Utilities: Producer Price Index (Sept 2006=100) for April 2020 - April 2021**

Year / Month	Electricity and water supply (Utilities)	Electricity supply	Production, transmission and distribution of electricity	Water supply	Collection, purification and distribution of water
ISIC	E	E40	E401	E41	E410
weight	100.00	93.25	93.25	6.75	6.75
April-2020	897.6	895.9	895.9	921.2	921.2
May-2020	898.3	896.7	896.7	921.2	921.2
June-2020	898.6	897.0	897.0	921.2	921.2
July-2020	898.8	897.3	897.3	921.2	921.2
August-2020	898.9	897.3	897.3	921.2	921.2
September-2020	898.9	897.4	897.4	921.2	921.2
October-2020	899.1	897.5	897.5	921.2	921.2
November-2020	899.1	897.6	897.6	921.1	921.1
December-2020	899.2	897.7	897.7	921.1	921.1
January-2021	899.5	898.0	898.0	921.1	921.1
February-2021	899.5	898.0	898.0	921.1	921.1
March-2021	899.2	897.7	897.7	921.1	921.1
April-2021	p 899.3	p 897.8	p 897.8	p 921.1	p 921.1

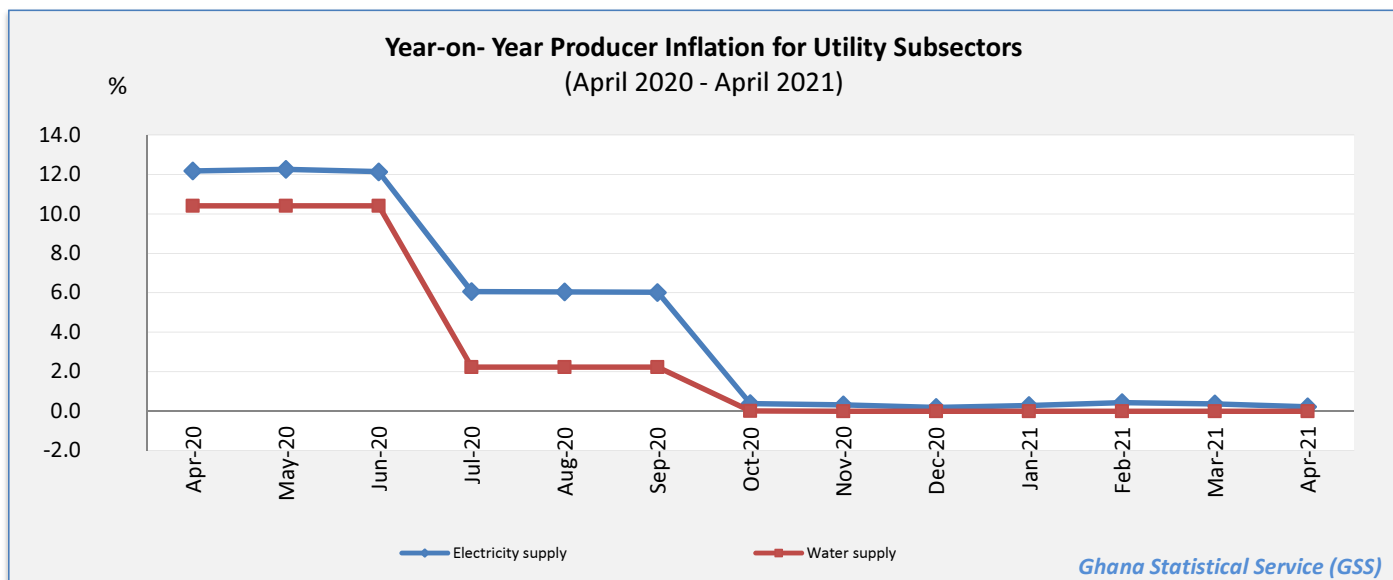
p: provisional



**Table 12: Utilities: Yearly Change Rates for April 2020 - April 2021 (%)**

Year / Month	Electricity and water supply (Utilities)	Electricity supply	Production, transmission and distribution of electricity	Water supply	Collection, purification and distribution of water
ISIC	E	E40	E401	E41	E410
weight	100.00	93.25	93.25	6.75	6.75
April-2020	12.1	12.2	12.2	10.4	10.4
May-2020	12.1	12.2	12.2	10.4	10.4
June-2020	12.0	12.1	12.1	10.4	10.4
July-2020	5.8	6.0	6.0	2.2	2.2
August-2020	5.8	6.0	6.0	2.2	2.2
September-2020	5.8	6.0	6.0	2.2	2.2
October-2020	0.3	0.4	0.4	0.0	0.0
November-2020	0.3	0.3	0.3	0.0	0.0
December-2020	0.2	0.2	0.2	0.0	0.0
January-2021	0.3	0.3	0.3	0.0	0.0
February-2021	0.4	0.4	0.4	0.0	0.0
March-2021	0.3	0.4	0.4	0.0	0.0
April-2021	p 0.2	p 0.2	p 0.2	p 0.0	p 0.0

p: provisional



**Table 13: Utilities: Monthly Change Rates for April 2020 - April 2021 (%)**

Year / Month	Electricity and water supply (Utilities)	Electricity supply	Production, transmission and distribution of electricity	Water supply	Collection, purification and distribution of water
ISIC	E	E40	E401	E41	E410
weight	100.00	93.25	93.25	6.75	6.75
April-2020	0.1	0.2	0.2	0.0	0.0
May-2020	0.1	0.1	0.1	0.0	0.0
June-2020	0.0	0.0	0.0	0.0	0.0
July-2020	0.0	0.0	0.0	0.0	0.0
August-2020	0.0	0.0	0.0	0.0	0.0
September-2020	0.0	0.0	0.0	0.0	0.0
October-2020	0.0	0.0	0.0	0.0	0.0
November-2020	0.0	0.0	0.0	0.0	0.0
December-2020	0.0	0.0	0.0	0.0	0.0
January-2021	0.0	0.0	0.0	0.0	0.0
February-2021	0.0	0.0	0.0	0.0	0.0
March-2021	0.0	0.0	0.0	0.0	0.0
April-2021	p 0.0	p 0.0	p 0.0	p 0.0	p 0.0

*p: provisional*

